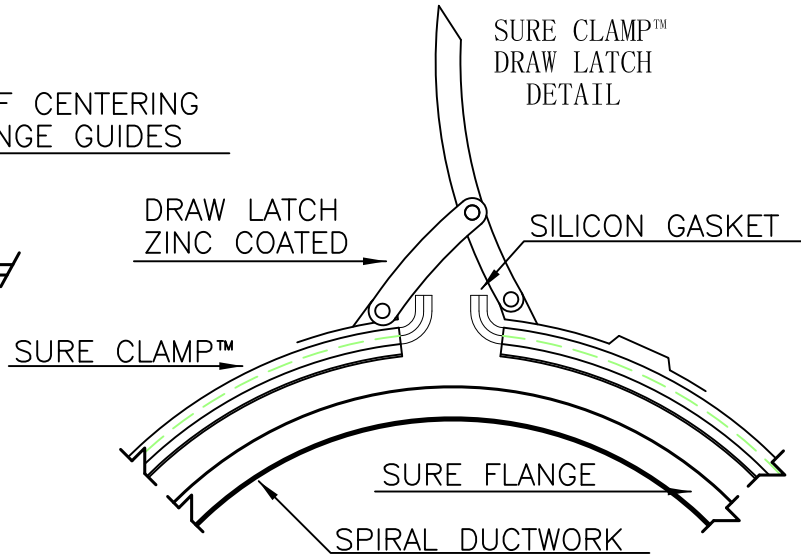
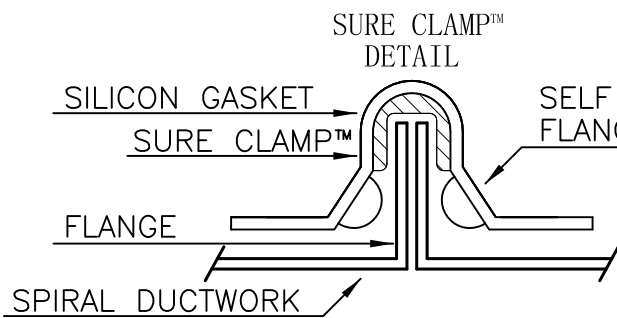
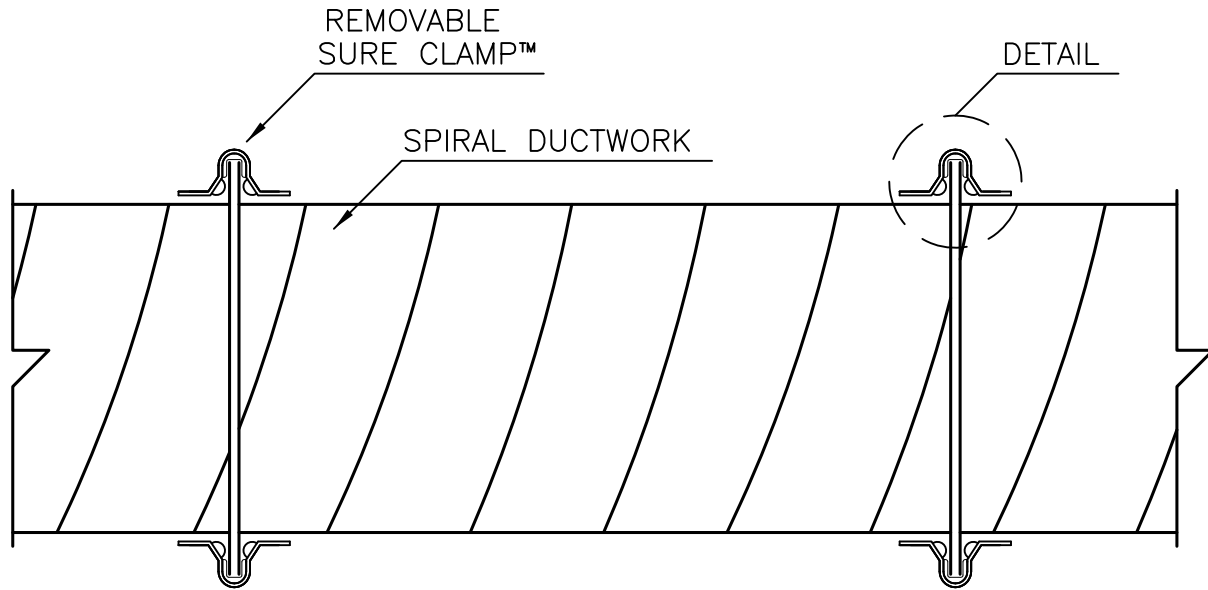


SUBMITTAL

SURE • CLAMP™

(PATENTED)



CONTINUOUS WELDED

CONTINUOUS WELDED SURE CLAMP
DUCTWORK IS AVAILABLE ON REQUEST
18-16-14 GAUGE

GALVANIZED SPIRAL & FITTING GAUGE CHART
UNREINFORCED

NEGATIVE PRESSURE TO 20" W.G.		
DIAMETER	FITTING	SPIRAL
4"-12"	22 GAUGE	22 GAUGE
13"-22"	20 GAUGE	20 GAUGE

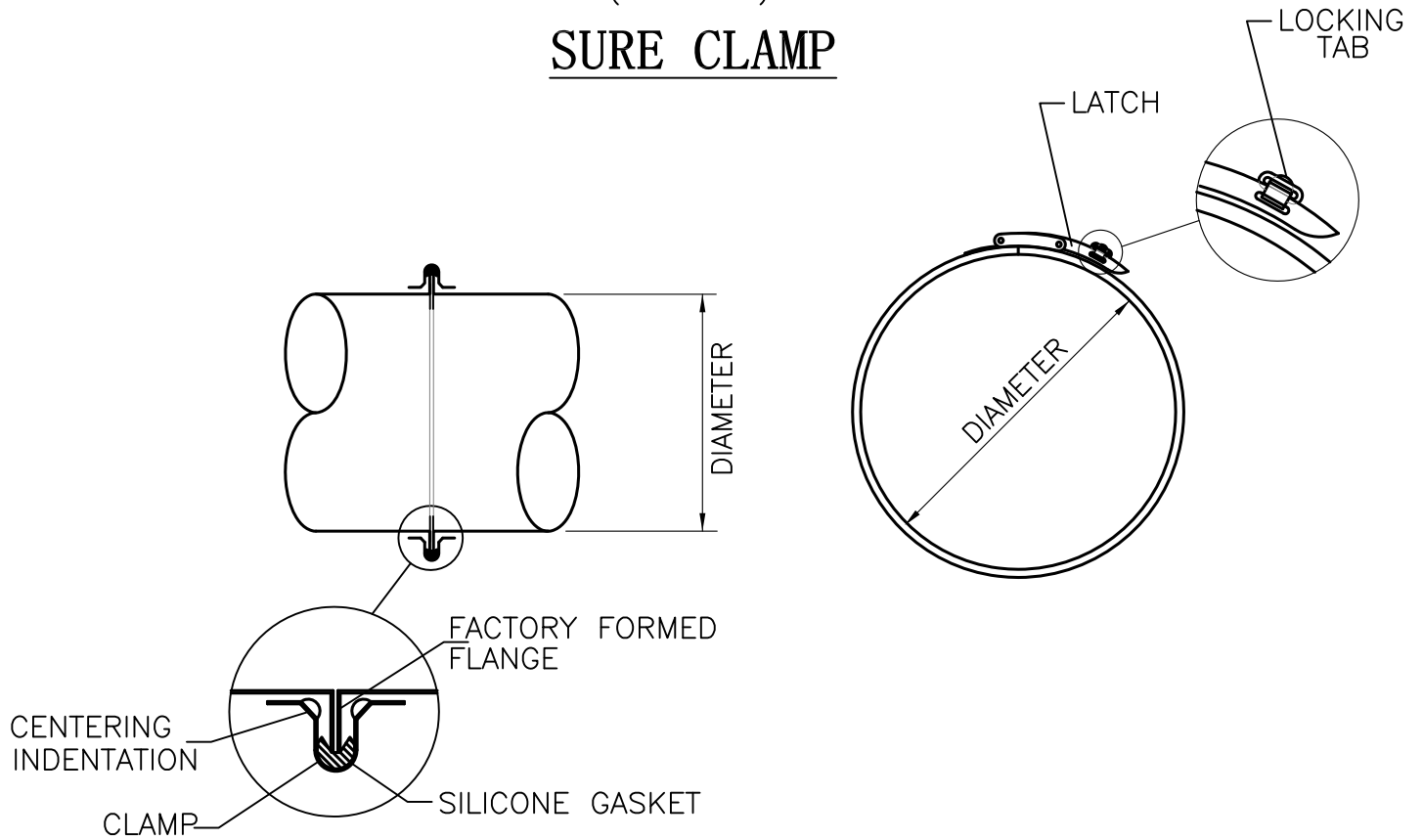
STAINLESS STEEL SPIRAL & FITTING GAUGE CHART
REINFORCE PER SMACNA STANDARDS

NEGATIVE PRESSURE TO 10" W.G.		
DIAMETER	FITTING	SPIRAL
4"-12"	24 GAUGE	24 GAUGE
13"-22"	22 GAUGE	22 GAUGE

www.langdonsheetmetal.com

Cincinnati, Ohio. 45215
The above mentioned product, is protected by patents and trade marks
All Rights Reserved updated 2/15/13

SUBMITTAL GALVANIZED SURE • CLAMP (PATENTED) SURE CLAMP



SYSTEM NUMBER/AREA : _____
 MATERIAL TYPE : GALVANIZED

QTY. DIAMETER

FABRICATE IN ACCORDANCE WITH
 LANGDON'S DUCT CONSTRUCTION STANDARDS

ZINC COATED LATCHES ARE PROVIDED
 FOR GALVANIZED CLAMPS.

INSTALL LOCKING TABS TO SECURE
 SURE CLAMP HANDLE



STANDARD SIZES 4"Ø THRU 22"Ø

<u>QTY.</u>	<u>DIAMETER</u>
_____	_____
_____	_____
_____	_____
_____	_____
_____	_____
_____	_____
_____	_____
_____	_____
_____	_____
_____	_____

www.langdonsheetmetal.com

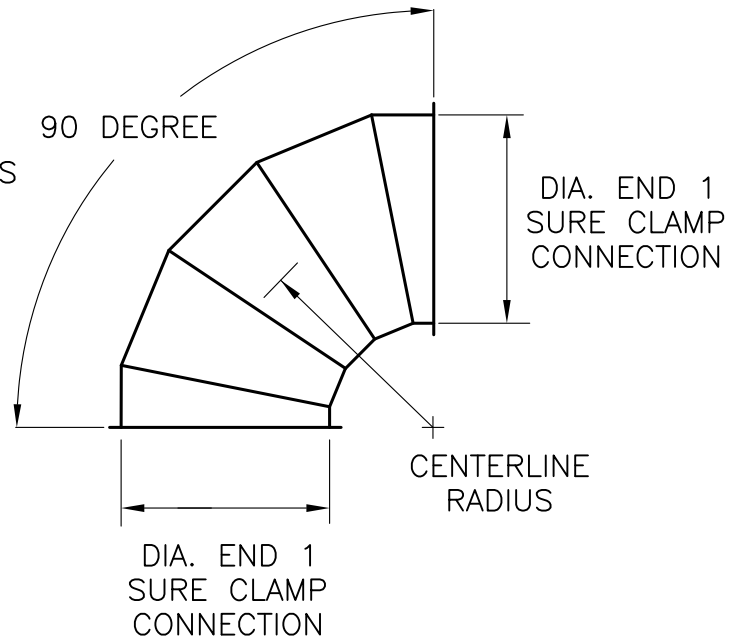
SUBMITTAL

SURE • CLAMP 16 GA. GALVANIZED FITTINGS

(PATENTED)

#52 ELBOWS

*SPECIFY
CUSTOM DEGREE
&
CENTERLINE RADIUS



SYSTEM NUMBER/AREA : _____
MATERIAL : 16 GA. GALVANIZED

FABRICATE IN ACCORDANCE WITH
LANGDON'S DUCT CONSTRUCTION STANDARDS

TRANSVERSE JOINT
SURE CLAMP

TAG

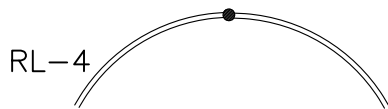
QTY.

DEGREE

DIA END 1

LONGITUDINAL/TRANSVERSE SEAMS

ANSI/AWS D9.1-90 MIG WELDED (GMAW)



CENTERLINE RADIUS
1.5 X DIAMETER

GORE AMOUNT

0-22 DEG. = 2 GORE

23-45 DEG. = 3 GORE

46-60 DEG. = 4 GORE

61-90 DEG. = 5 GORE

STANDARD SIZES 4"Ø THRU 22"Ø

www.langdonsheetmetal.com

SUBMITTAL

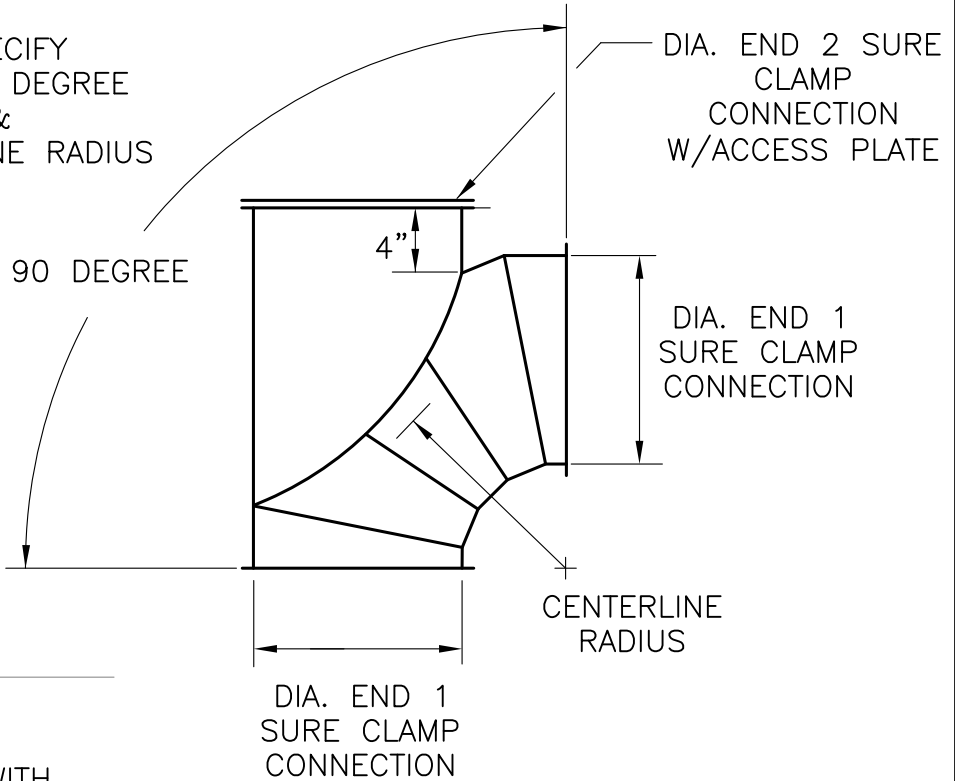
SURE • CLAMP 16 GA. GALVANIZED FITTINGS

(PATENTED)

#52 ELBOWS/CLEANOUT DOOR

*SPECIFY
CUSTOM DEGREE
&
CENTERLINE RADIUS

90 DEGREE



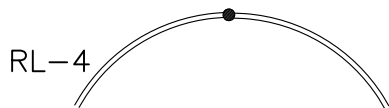
SYSTEM NUMBER/AREA : _____
MATERIAL : 16 GA. GALVANIZED

FABRICATE IN ACCORDANCE WITH
LANGDON'S DUCT CONSTRUCTION STANDARDS

TRANSVERSE JOINT
SURE CLAMP

<u>TAG</u>	<u>QTY.</u>	<u>DIA.</u> <u>END 1</u>	<u>DIA.</u> <u>END 2</u>
_____	_____	_____	_____
_____	_____	_____	_____
_____	_____	_____	_____
_____	_____	_____	_____
_____	_____	_____	_____
_____	_____	_____	_____
_____	_____	_____	_____
_____	_____	_____	_____
_____	_____	_____	_____
_____	_____	_____	_____

LONGITUDINAL/TRANSVERSE SEAMS
ANSI/AWS D9.1-90 MIG WELDED (GMAW)



CENTERLINE RADIUS
1.5 X DIAMETER

GORE AMOUNT
90 DEG. = 5 GORE

STANDARD SIZES 4"Ø THRU 22"Ø

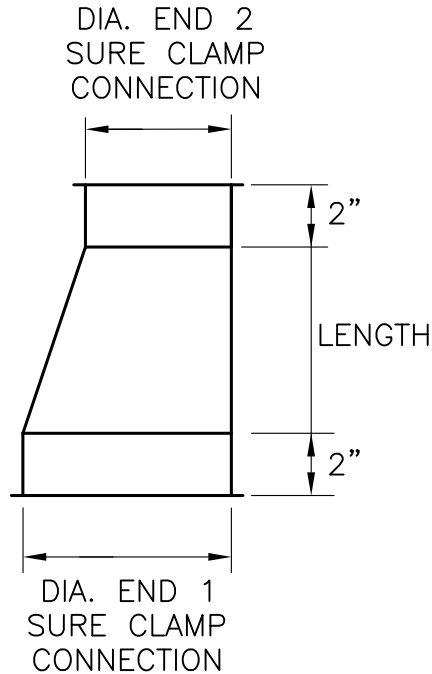
www.langdonsheetmetal.com

SUBMITTAL

SURE • CLAMP 16 GA. GALVANIZED FITTINGS

(PATENTED)

#69 ECENTRIC REDUCER



SYSTEM NUMBER/AREA : _____
 MATERIAL : 16 GA. GALVANIZED

TAG

QTY.

DIA. END 1

DIA END 2

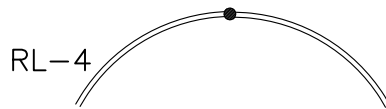
FABRICATE IN ACCORDANCE WITH
 LANGDON'S DUCT CONSTRUCTION STANDARDS

TRANSVERSE JOINT

SURE CLAMP

LONGITUDINAL/TRANSVERSE SEAMS

ANSI/AWS D9.1-90 MIG WELDED (GMAW)



LENGTH (4" MINIMUM)

(END 1 - END 2) x 2

STANDARD SIZES 4"φ THRU 22"φ

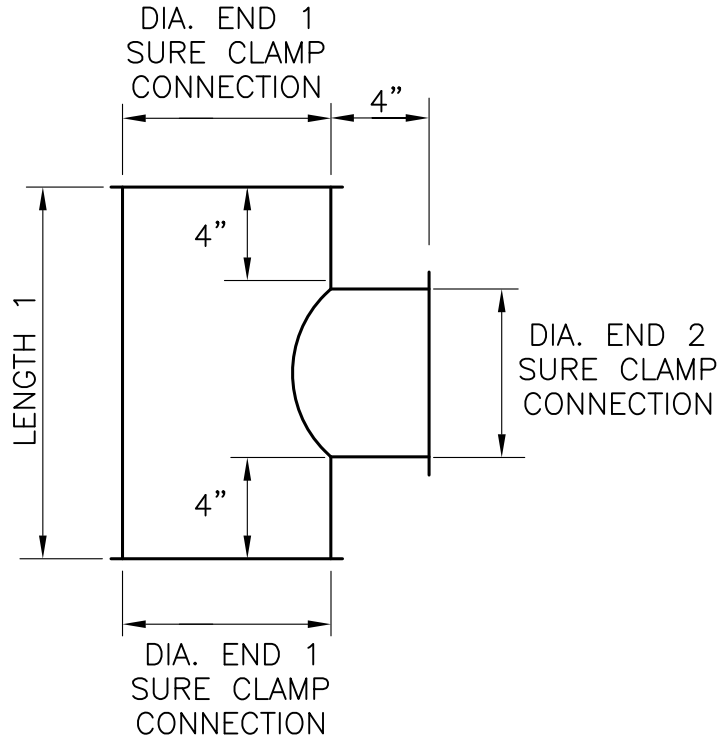
www.langdonsheetmetal.com

SUBMITTAL

SURE • CLAMP 16 GA. GALVANIZED FITTINGS

(PATENTED)

#55 STRAIGHT 90 DEGREE TEE



SYSTEM NUMBER/AREA : _____

TAG

QTY.

DIA. END 1

DIA. END 2

MATERIAL : 16 GA. GALVANIZED

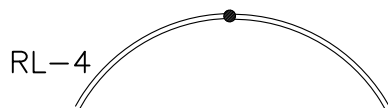
FABRICATE IN ACCORDANCE WITH
LANGDON'S DUCT CONSTRUCTION STANDARDS

TRANSVERSE JOINT

SURE CLAMP

LONGITUDINAL/TRANSVERSE SEAMS

ANSI/AWS D9.1-90 MIG WELDED (GMAW)



LENGTH 1

END 2 + 8"

STANDARD SIZES 4"Ø THRU 22"Ø

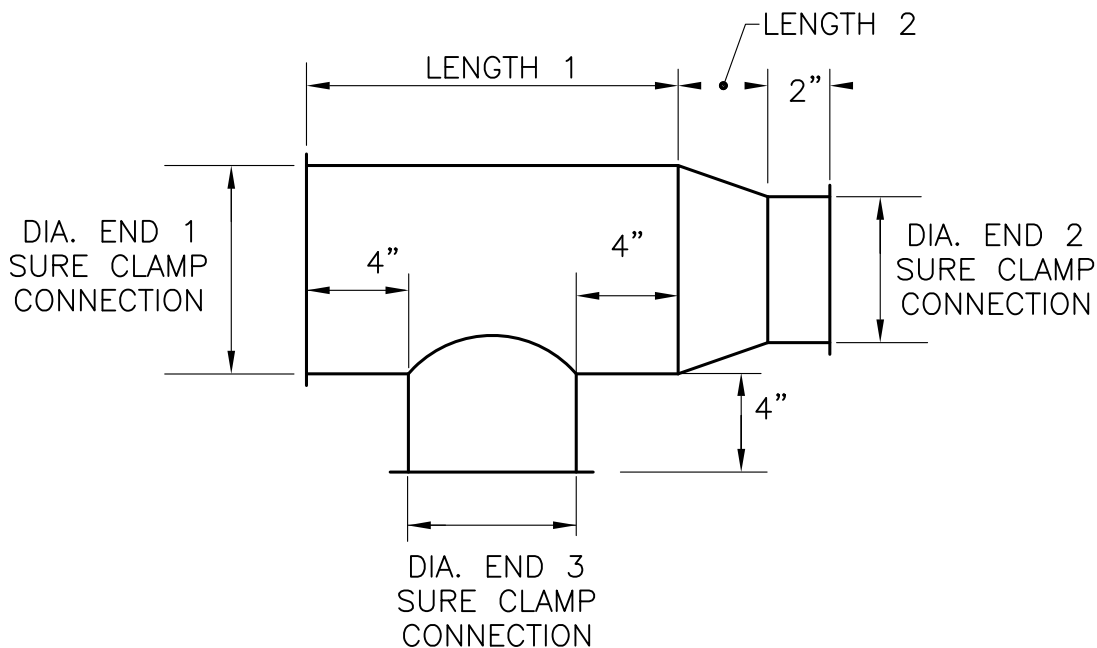
www.langdonsheetmetal.com

SUBMITTAL

SURE • CLAMP 16 GA. GALVANIZED FITTINGS

(PATENTED)

#65 CONCENTRIC REDUCING TEE 90 DEGREE

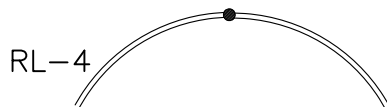


SYSTEM NUMBER/AREA : _____	<u>TAG</u>	<u>QTY.</u>	<u>DIA.</u> <u>END 1</u>	<u>DIA.</u> <u>END 2</u>	<u>DIA.</u> <u>END 3</u>
MATERIAL : 16 GA. GALVANIZED	_____	_____	_____	_____	_____

FABRICATE IN ACCORDANCE WITH
LANGDON'S DUCT CONSTRUCTION STANDARDS

TRANSVERSE JOINT
SURE CLAMP

LONGITUDINAL/TRANSVERSE SEAMS
ANSI/AWS D9.1-90 MIG WELDED (GMAW)



LENGTH 1
END 3 + 8"

LENGTH 2 (4" MINIMUM)
END 1 - END 2

STANDARD SIZES 4"Ø THRU 22"Ø

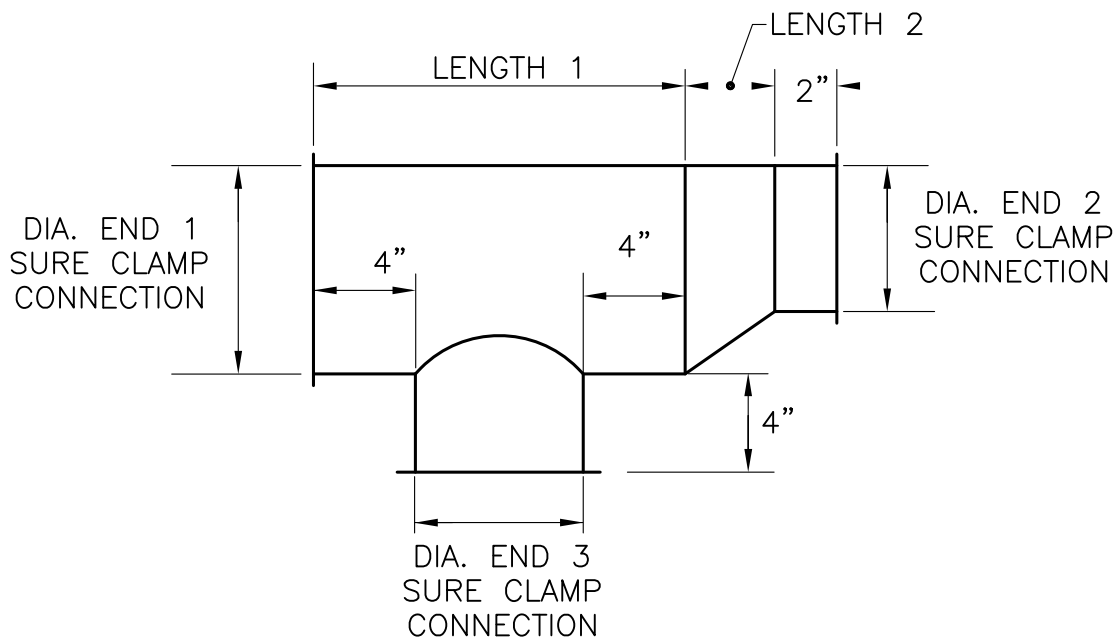
www.langdonsheetmetal.com

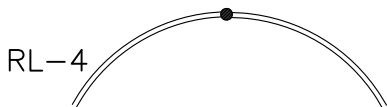
SUBMITTAL

SURE • CLAMP 16 GA. GALVANIZED FITTINGS

(PATENTED)

#65F ECCENTRIC REDUCING TEE 90 DEGREE



	<u>TAG</u>	<u>QTY.</u>	<u>DIA.</u> <u>END 1</u>	<u>DIA.</u> <u>END 2</u>	<u>DIA.</u> <u>END 3</u>
SYSTEM NUMBER/AREA : _____	_____	_____	_____	_____	_____
MATERIAL : 16 GA. GALVANIZED	_____	_____	_____	_____	_____
FABRICATE IN ACCORDANCE WITH LANGDON'S DUCT CONSTRUCTION STANDARDS	_____	_____	_____	_____	_____
<u>TRANSVERSE JOINT</u> SURE CLAMP	_____	_____	_____	_____	_____
<u>LONGITUDINAL/TRANSVERSE SEAMS</u> ANSI/AWS D9.1-90 MIG WELDED (GMAW)	_____	_____	_____	_____	_____
<div style="text-align: center;">  <p>RL-4</p> <p><u>LENGTH 1</u></p> <p>END 3 + 8"</p> </div>	_____	_____	_____	_____	_____
<u>LENGTH 2 (4" MINIMUM)</u> (END 1 - END 2) X 2	_____	_____	_____	_____	_____
STANDARD SIZES 4"Ø THRU 22"Ø	_____	_____	_____	_____	_____

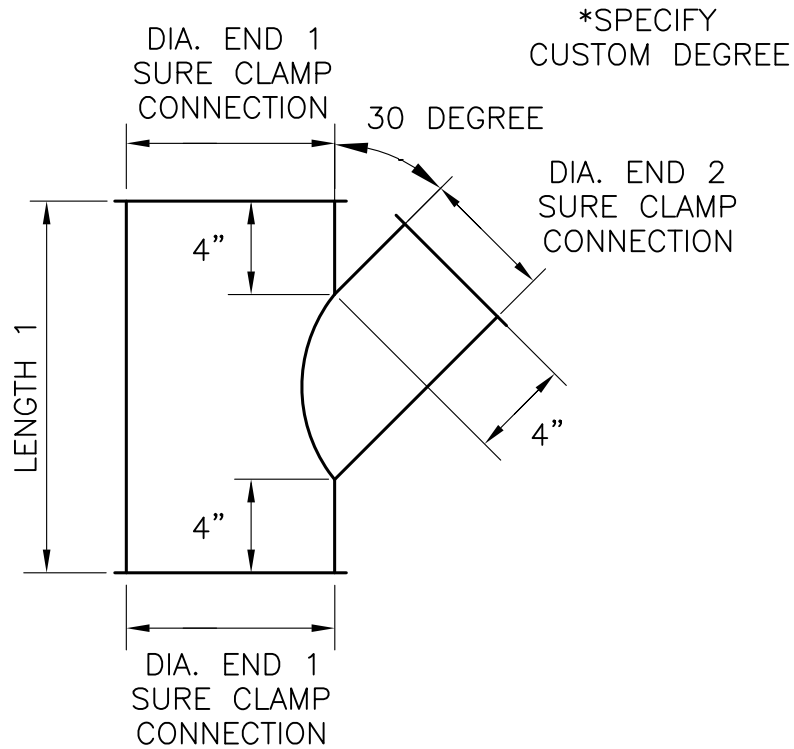
www.langdonsheetmetal.com

SUBMITTAL

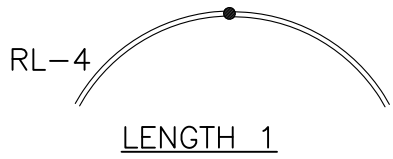
SURE • CLAMP 16 GA. GALVANIZED FITTINGS

(PATENTED)

#54 LATERAL



*SPECIFY
CUSTOM DEGREE

	<u>TAG</u>	<u>QTY.</u>	<u>DIA.</u> <u>END 1</u>	<u>DIA.</u> <u>END 2</u>
SYSTEM NUMBER/AREA : _____	_____	_____	_____	_____
MATERIAL : 16 GA. GALVANIZED	_____	_____	_____	_____
FABRICATE IN ACCORDANCE WITH	_____	_____	_____	_____
LANGDON'S DUCT CONSTRUCTION STANDARDS	_____	_____	_____	_____
<u>TRANSVERSE JOINT</u>	_____	_____	_____	_____
SURE CLAMP	_____	_____	_____	_____
<u>LONGITUDINAL/TRANSVERSE SEAMS</u>	_____	_____	_____	_____
ANSI/AWS D9.1-90 MIG WELDED (GMAW)	_____	_____	_____	_____
	_____	_____	_____	_____
30 DEGREE: DIA. END 2 X (2) + 8	_____	_____	_____	_____
15 DEGREE: DIA. END 2 X (3.86) + 8	_____	_____	_____	_____
STANDARD SIZES 4"Ø THRU 22"Ø	_____	_____	_____	_____

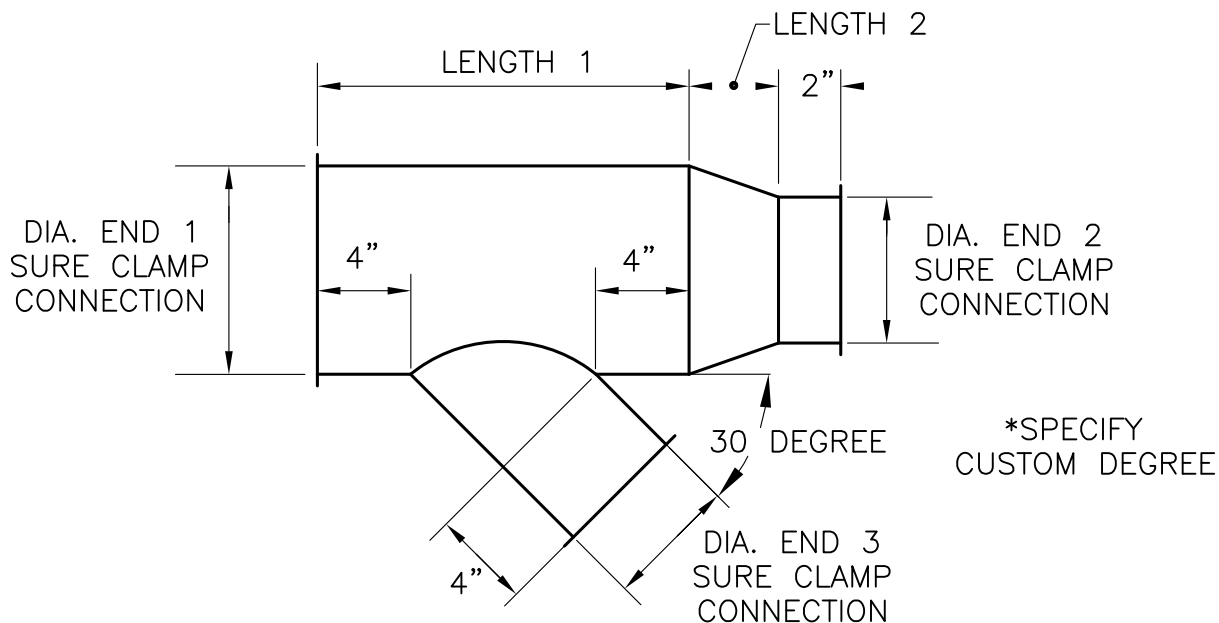
www.langdonsheetmetal.com

SUBMITTAL

SURE • CLAMP 16 GA. GALVANIZED FITTINGS

(PATENTED)

#63 REDUCING LATERAL

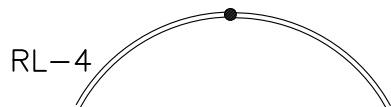


SYSTEM NUMBER/AREA : _____	TAG	QTY.	DIA. END 1	DIA. END 2	DIA. END 3
MATERIAL : 16 GA. GALVANIZED	_____	_____	_____	_____	_____

FABRICATE IN ACCORDANCE WITH
LANGDON'S DUCT CONSTRUCTION STANDARDS

TRANSVERSE JOINT
SURE CLAMP

LONGITUDINAL/TRANSVERSE SEAMS
ANSI/AWS D9.1-90 MIG WELDED (GMAW)



30 DEGREE: DIA. END 3 X (2) + 8
15 DEGREE: DIA. END 2 X (3.86) + 8

LENGTH 2 (4" MINIMUM)
END 1 - END 2

STANDARD SIZES 4"Ø THRU 22"Ø

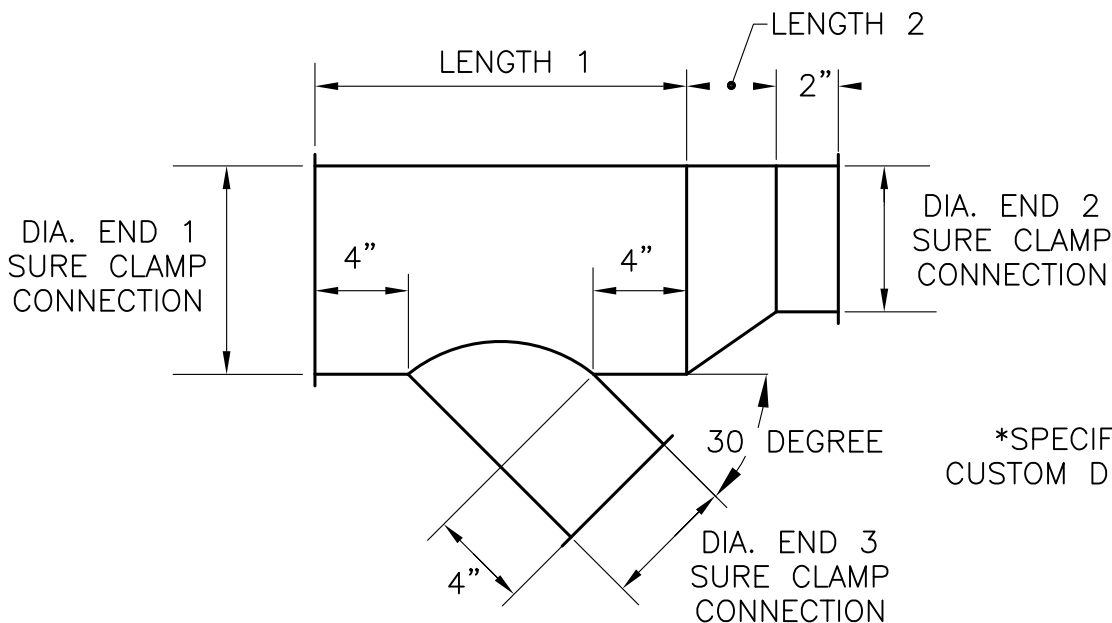
www.langdonsheetmetal.com

SUBMITTAL

SURE • CLAMP 16 GA. GALVANIZED FITTINGS

(PATENTED)

#63F ECCENTRIC REDUCING LATERAL

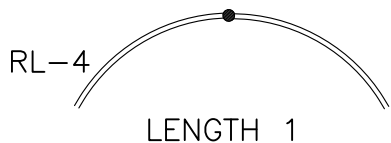


SYSTEM NUMBER/AREA : _____	<u>TAG</u>	<u>QTY.</u>	<u>DIA.</u> <u>END 1</u>	<u>DIA.</u> <u>END 2</u>	<u>DIA.</u> <u>END 3</u>
MATERIAL : 16 GA. GALVANIZED	_____	_____	_____	_____	_____

FABRICATE IN ACCORDANCE WITH
LANGDON'S DUCT CONSTRUCTION STANDARDS

TRANSVERSE JOINT
SURE CLAMP

LONGITUDINAL/TRANSVERSE SEAMS
ANSI/AWS D9.1-90 MIG WELDED (GMAW)



30 DEGREE: DIA. END 3 X (2) + 8
15 DEGREE: DIA. END 2 X (3.86) + 8

LENGTH 2 (4" MINIMUM)
(END 1 - END 2) X 2

STANDARD SIZES 4"Ø THRU 22"Ø

www.langdonsheetmetal.com

SUBMITTAL

SURE • CLAMP 16 GA. GALVANIZED FITTINGS

(PATENTED)

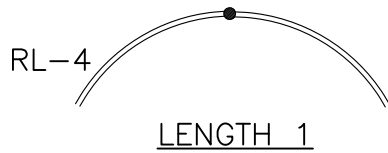
#64 REDUCING LATERAL CROSS

SYSTEM NUMBER/AREA : _____
 MATERIAL : 16 GA. GALVANIZED

FABRICATE IN ACCORDANCE WITH
 LANGDON'S DUCT CONSTRUCTION STANDARDS

TRANSVERSE JOINT
 SURE CLAMP

LONGITUDINAL/TRANSVERSE SEAMS
 ANSI/AWS D9.1-90 MIG WELDED (GMAW)

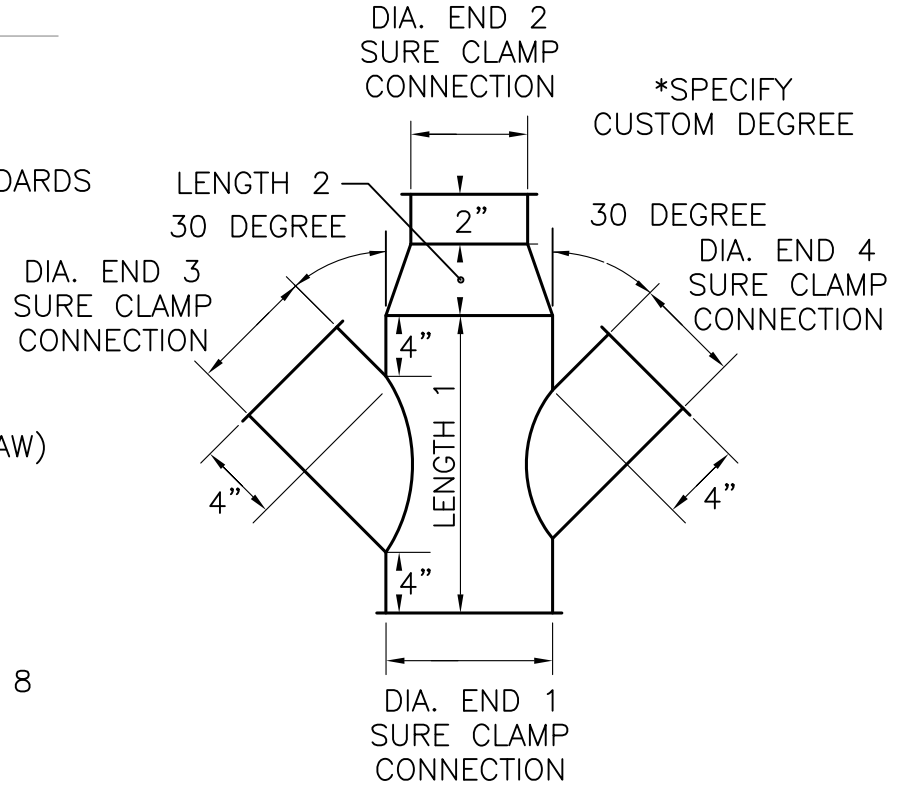


30 DEGREE: DIA. END 3 X (2) + 8

LENGTH 2 (4" MINIMUM)
 END 1 - END 2

STANDARD SIZES 4"Ø THRU 22"Ø

<u>TAG</u>	<u>QTY.</u>	<u>DIA. END 1</u>	<u>DIA END 2</u>	<u>DIA END 3</u>	<u>DIA END 4</u>



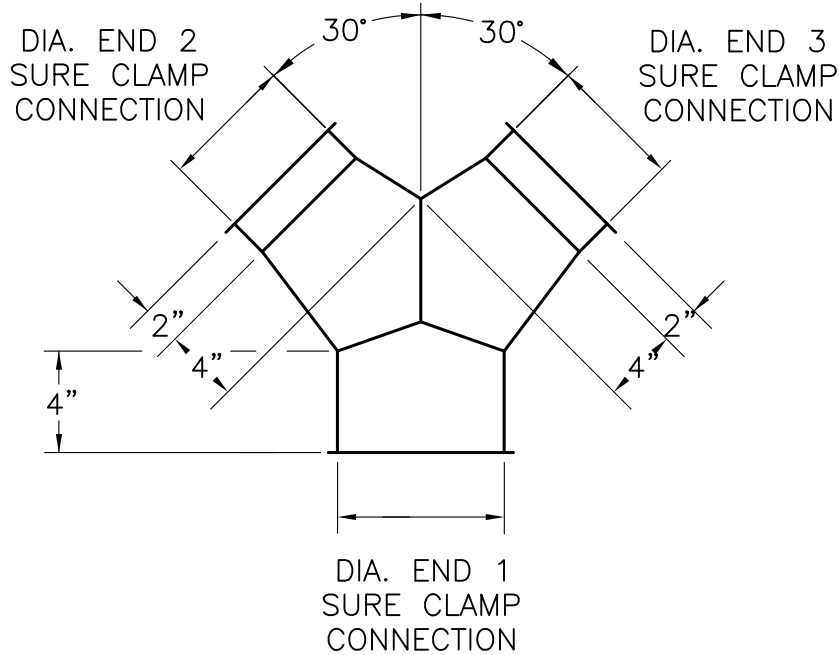
SUBMITTAL

SURE • CLAMP 16 GA. GALVANIZED FITTINGS

(PATENTED)

#132 30° Y BRANCH REDUCING

*SPECIFY CUSTOM DEGREE



	<u>TAG</u>	<u>QTY.</u>	<u>DIA.</u> <u>END 1</u>	<u>DIA.</u> <u>END 2</u>	<u>DIA.</u> <u>END 3</u>
SYSTEM NUMBER/AREA : _____	_____	_____	_____	_____	_____
MATERIAL : 16 GA. GALVANIZED	_____	_____	_____	_____	_____
FABRICATE IN ACCORDANCE WITH	_____	_____	_____	_____	_____
LANGDON'S DUCT CONSTRUCTION STANDARDS	_____	_____	_____	_____	_____
<u>TRANSVERSE JOINT</u>	_____	_____	_____	_____	_____
SURE CLAMP	_____	_____	_____	_____	_____
<u>LONGITUDINAL/TRANSVERSE SEAMS</u>	_____	_____	_____	_____	_____
ANSI/AWS D9.1-90 MIG WELDED (GMAW)	_____	_____	_____	_____	_____
RL-4	_____	_____	_____	_____	_____
STANDARD SIZES 4"Ø THRU 22"Ø	_____	_____	_____	_____	_____

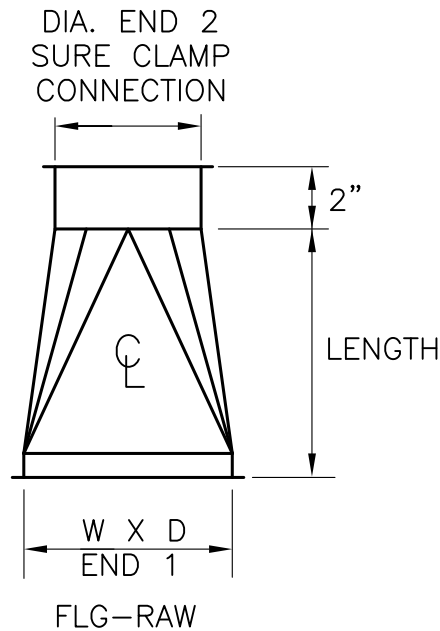
www.langdonsheetmetal.com

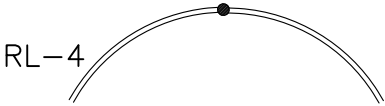
SUBMITTAL

SURE • CLAMP 16 GA. GALVANIZED FITTINGS

(PATENTED)

#50 CENTER LINE SQUARE TO ROUND



	<u>TAG</u>	<u>QTY.</u>	<u>W X D END 1 CENTERLINE</u>	<u>CONN. TYPE END 1</u>	<u>DIA. END 2 CENTERLINE</u>
SYSTEM NUMBER/AREA : _____					
MATERIAL : 16 GA. GALVANIZED			X		
FABRICATE IN ACCORDANCE WITH			X		
LANGDON'S DUCT CONSTRUCTION STANDARDS			X		
<u>END 1 TRANSVERSE JOINT</u>			X		
FLG-RAW			X		
<u>END 2 TRANSVERSE JOINT</u>			X		
SURE CLAMP			X		
<u>LONGITUDINAL/TRANSVERSE SEAMS</u>			X		
ANSI/AWS D9.1-90 MIG WELDED (GMAW)			X		
			X		
<u>LENGTH (6" MINIMUM)</u>			X		
END 1 (W OR D LARGEST ONE)			X		
- END 2					
STANDARD SIZES 4"Ø THRU 22"Ø					

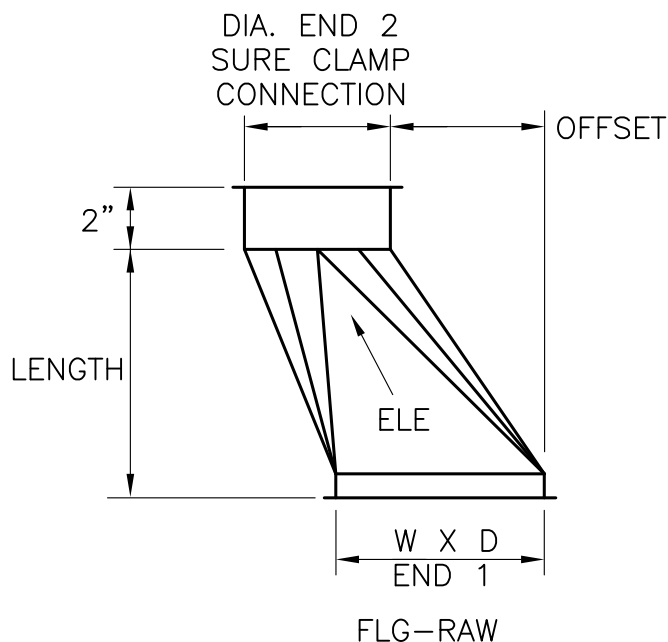
www.langdonsheetmetal.com

SUBMITTAL

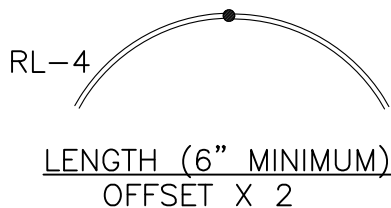
SURE • CLAMP 16 GA. GALVANIZED FITTINGS

(PATENTED)

#74 OFFSET SQUARE TO ROUND



SYSTEM NUMBER/AREA : _____	TAG	QTY.	<u>W X D</u> <u>END 1</u>	<u>CONN.</u> <u>TYPE</u> <u>END 1</u>	<u>DIA</u> <u>END 2</u>	<u>OFF.</u>	<u>ELE.</u> <u>TU/TD</u>
MATERIAL : 16 GA. GALVANIZED	_____	_____	X	_____	_____	_____	_____
FABRICATE IN ACCORDANCE WITH LANGDON'S DUCT CONSTRUCTION STANDARDS	_____	_____	X	_____	_____	_____	_____
<u>END 1 TRANSVERSE JOINT</u> FLG-RAW	_____	_____	X	_____	_____	_____	_____
<u>END 2 TRANSVERSE JOINT</u> SURE CLAMP	_____	_____	X	_____	_____	_____	_____
<u>LONGITUDINAL/TRANSVERSE SEAMS</u> ANSI/AWS D9.1-90 MIG WELDED (GMAW)	_____	_____	X	_____	_____	_____	_____
	_____	_____	X	_____	_____	_____	_____
	_____	_____	X	_____	_____	_____	_____
	_____	_____	X	_____	_____	_____	_____

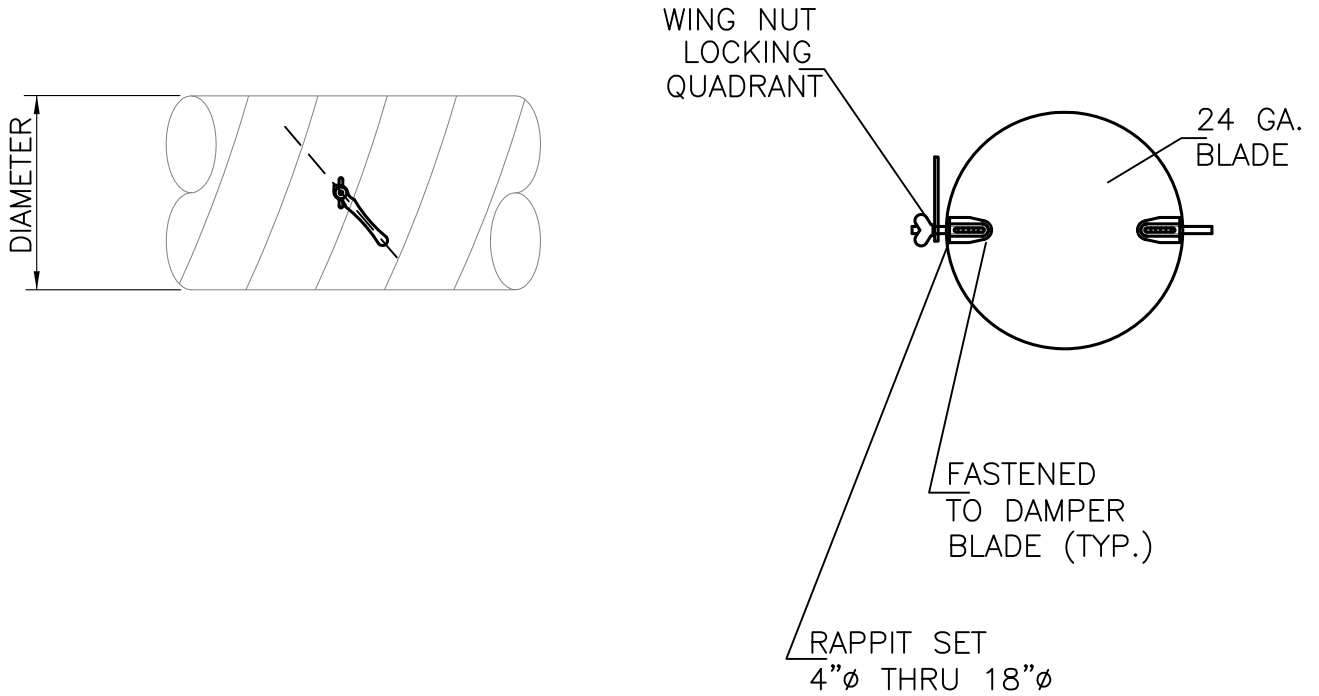


STANDARD SIZES 4"Ø THRU 22"Ø

www.langdonsheetmetal.com

SUBMITTAL SPIRAL FITTINGS

MANUAL VOLUME DAMPER 4"Ø TO 18"Ø



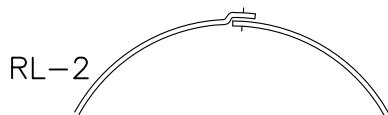
SYSTEM NUMBER/AREA : _____
 MATERIAL/STATIC WG : _____

TAG QTY. DIAMETER

FABRICATE IN ACCORDANCE WITH
 SMACNA DUCT CONSTRUCTION STANDARDS

TRANSVERSE JOINT
 SMALL END SLIP CONNECTION

LONGITUDINAL SEAMS
 LAP, SPOTWELD AND SEAL



STANDARD SIZES 4"Ø THRU 18"Ø

_____	_____	_____
_____	_____	_____
_____	_____	_____
_____	_____	_____
_____	_____	_____
_____	_____	_____
_____	_____	_____
_____	_____	_____
_____	_____	_____
_____	_____	_____

